



NOBLECROFT

Private Real Estate Excellence on a Global Scale

D-58, Ground floor and basement,
Okhla Industrial Area Phase 1
New Delhi- 110020

+91 9988776655
info@noblecroft.com





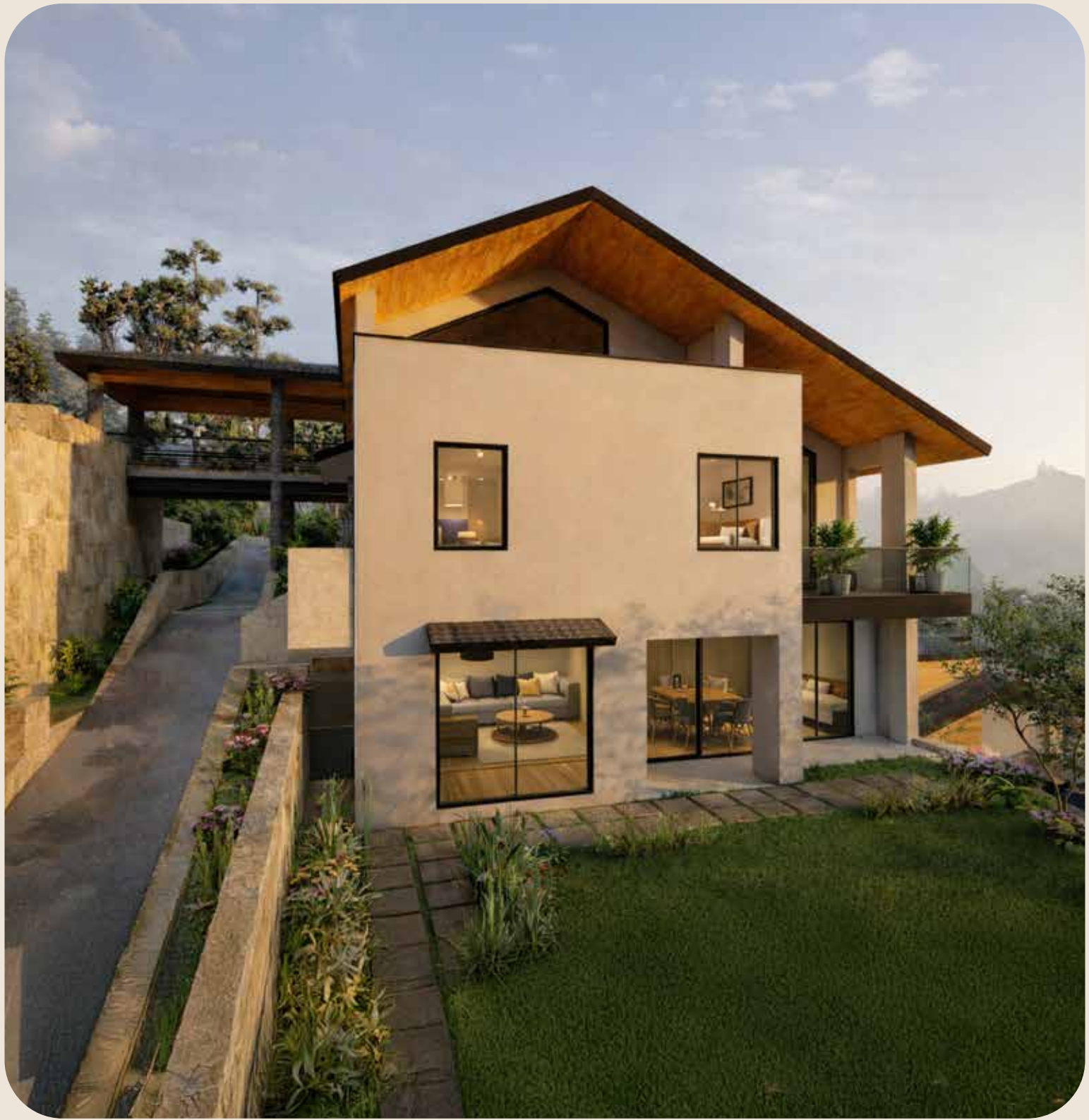
Noblecroft is a boutique real estate development company dedicated to creating thoughtfully designed villas that balance architectural integrity, natural surroundings, and enduring value. Rooted in the belief that true luxury lies in space, privacy, and quality, Noblecroft develops limited-edition residences for discerning homeowners.

Project Overview






NOBLECROFT



Villa 1

 Solan, India



PROJECT TYPE
Boutique Villa



STATUS PROJECT
Under Construction

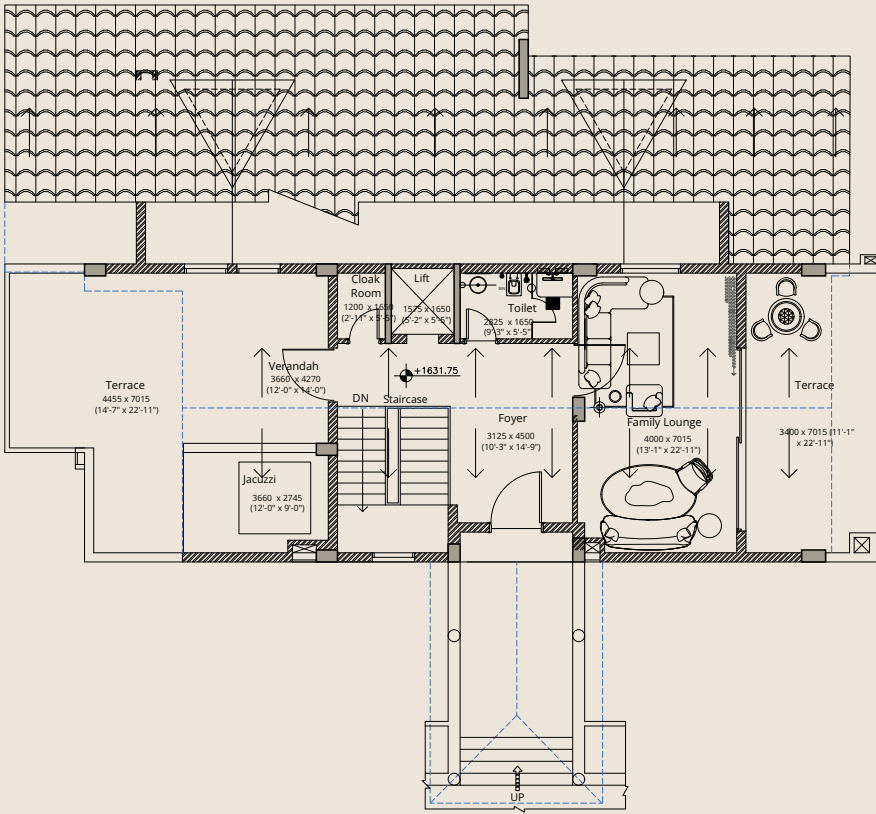


FINISH TARGET
December, 2027



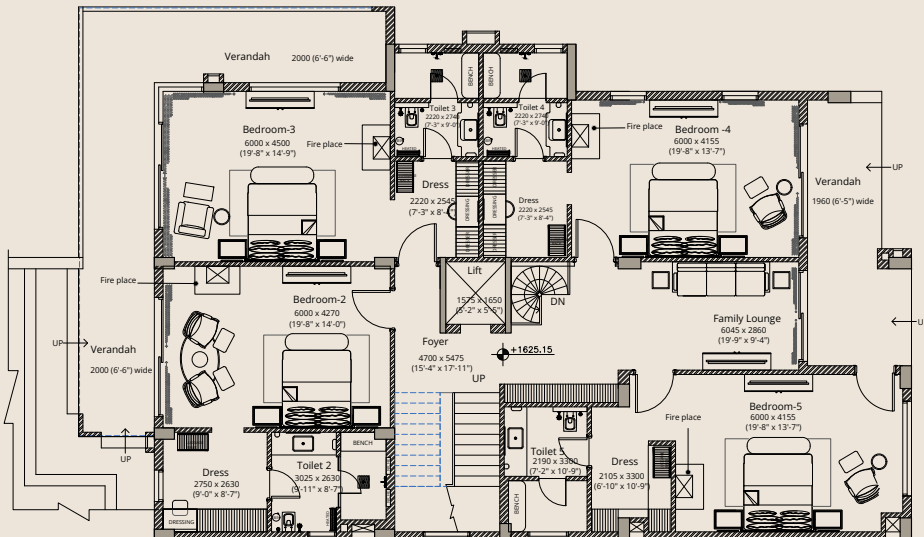
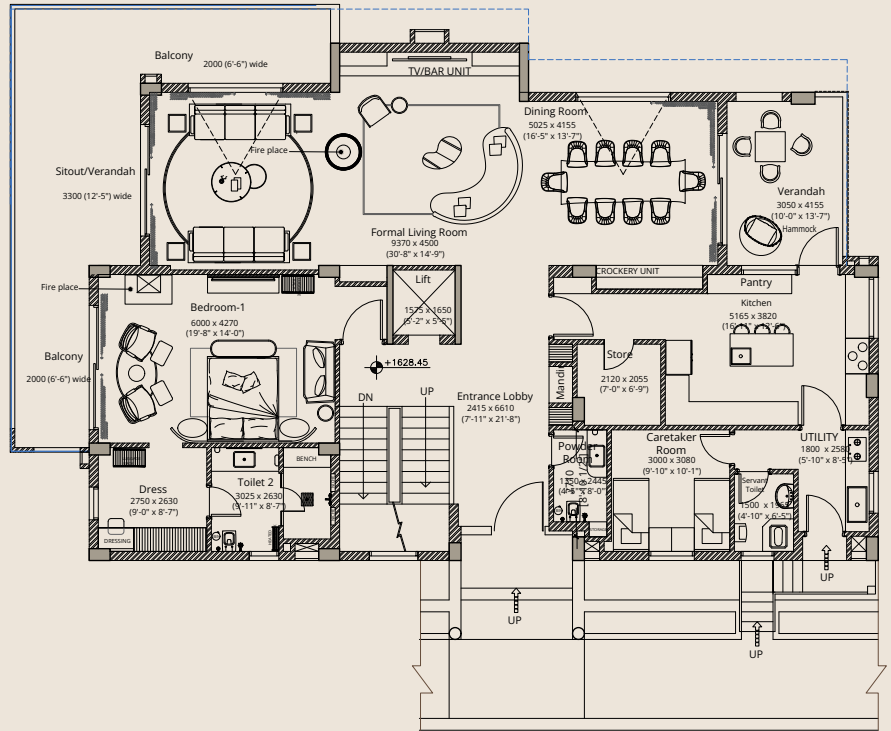
PROJECT AREA
8,048 sq. ft





Second floor Level Plan
1,930 sq. ft.

First floor Level Plan
3,143 sq. ft.



Ground floor Level Plan
2,976 sq. ft.

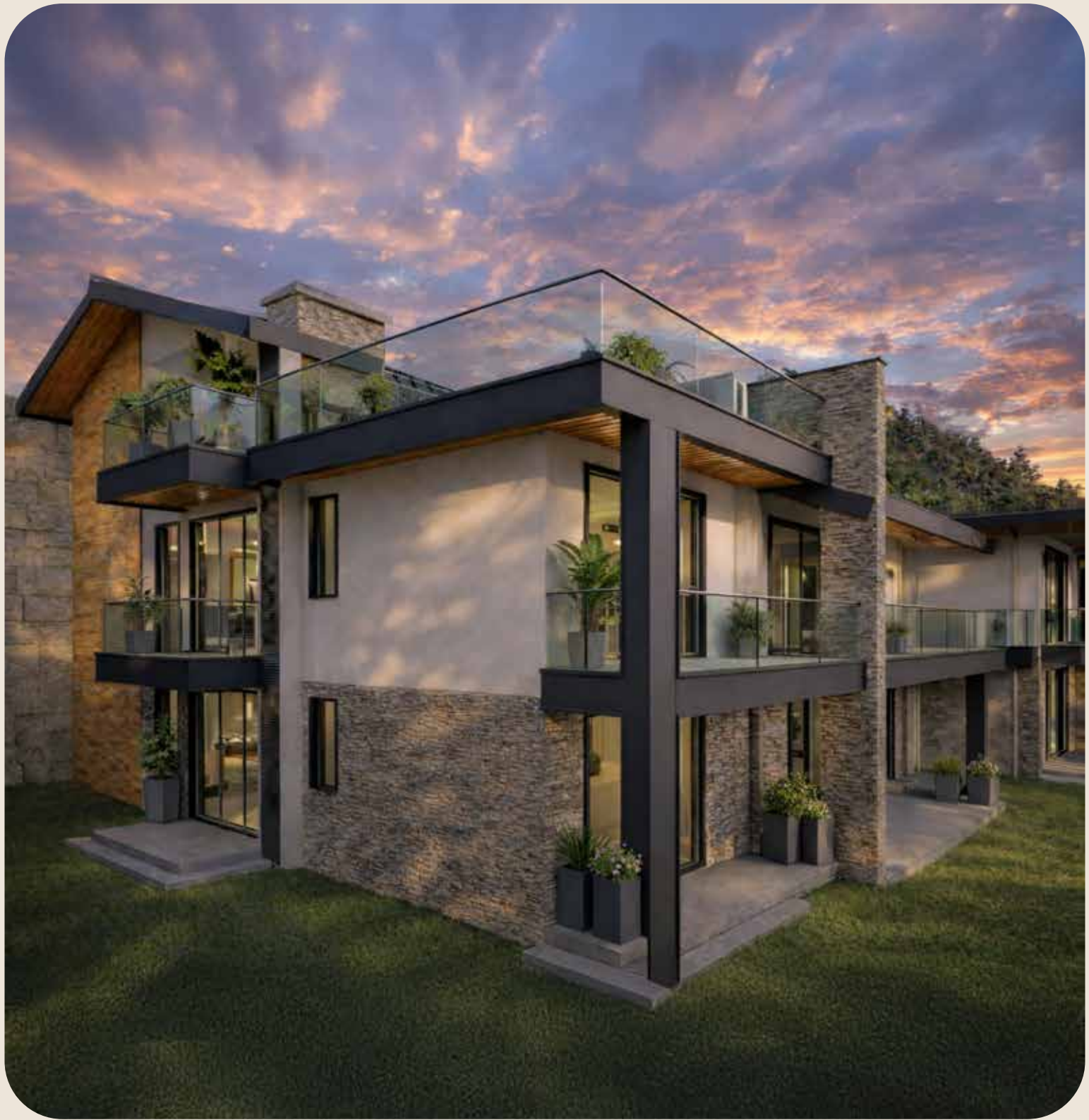


Key features:


- Gated community with round the clock security
- Complete MEP services for hassle free property management by a dedicated team.
- 24hr running hot water supply
- Common wellness areas with Gyms and swimming pool.
- Private terrace jacuzzi and bar with each villa.
- Private elevator
- private outdoor lawn
- dedicated car parking for each villa







Villa 2

 Solan, India



PROJECT TYPE
Boutique Villa



STATUS PROJECT
Under Construction

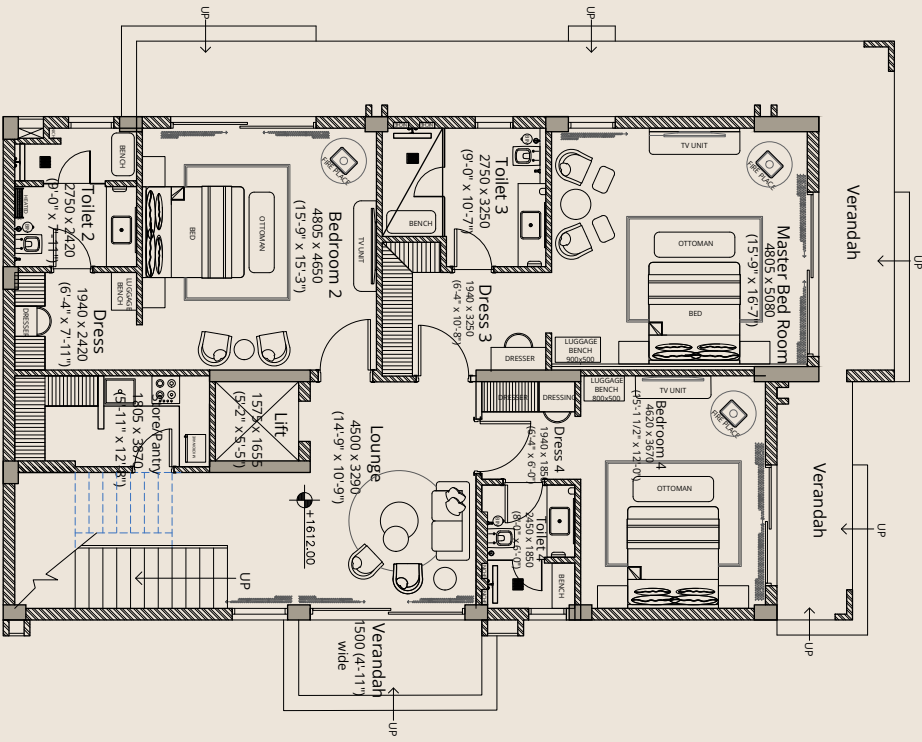


FINISH TARGET
December, 2027

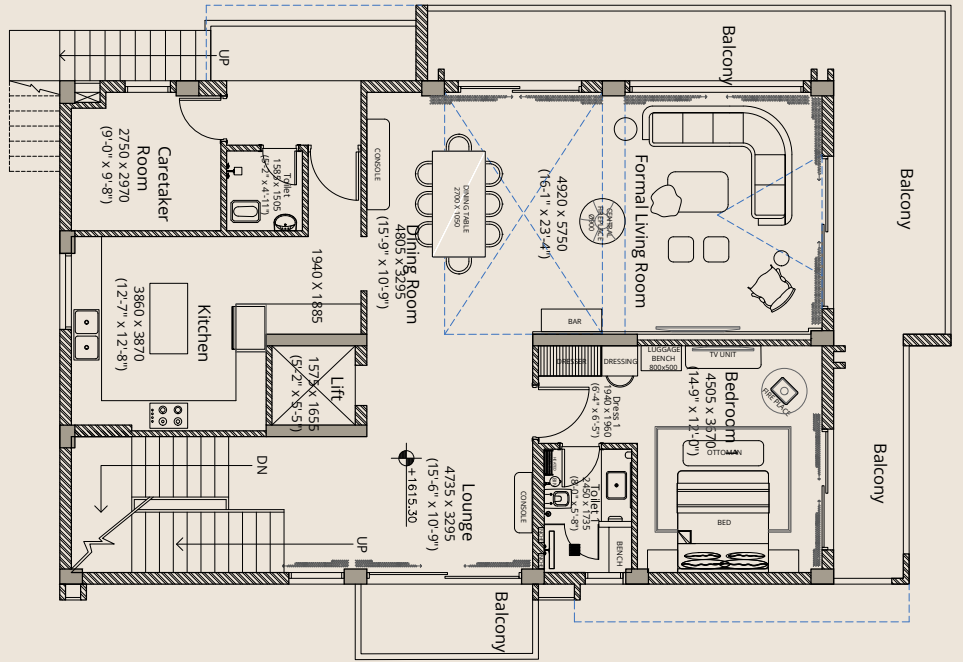


PROJECT AREA
5,669 sq. ft

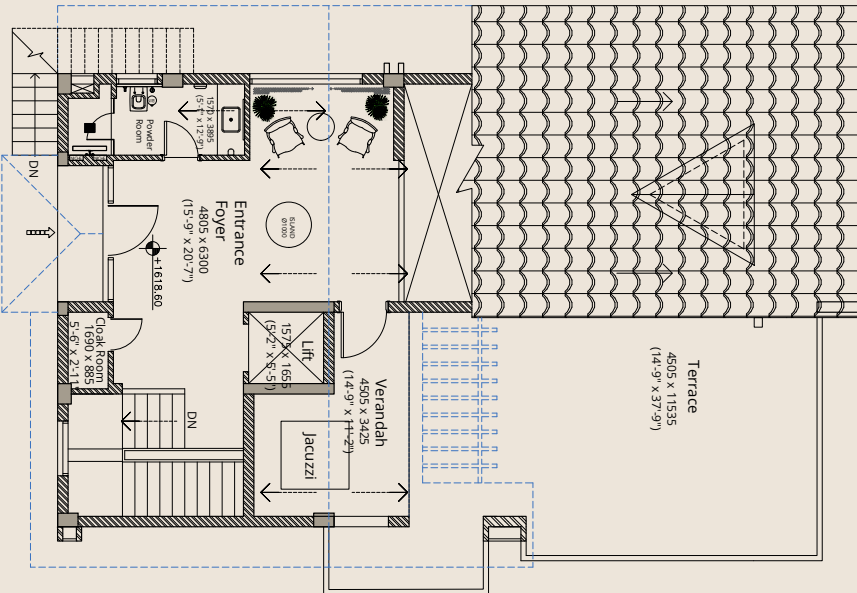




Second floor Level Plan
1,295 sq. ft.



First floor Level Plan
2,209 sq. ft.



Ground floor Level Plan
2,165 sq. ft.



Key features:


- Gated community with round the clock security
- Complete MEP services for hassle free property management by a dedicated team.
- 24hr running hot water supply
- Common wellness areas with Gyms and swimming pool.
- Private terrace jacuzzi and bar with each villa.
- Private elevator
- private outdoor lawn
- dedicated car parking for each villa







Villa 3

 Solan, India



PROJECT TYPE
Boutique Villa



STATUS PROJECT
Under Construction



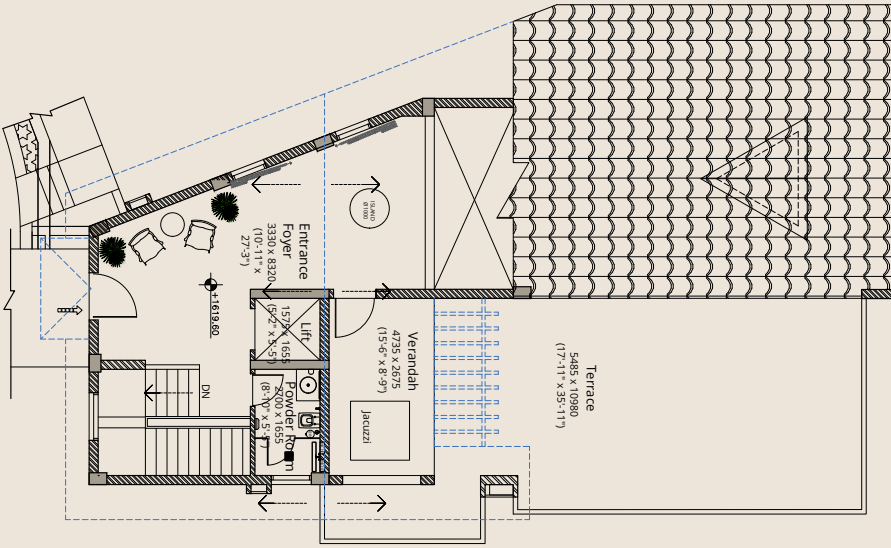
FINISH TARGET
December, 2027



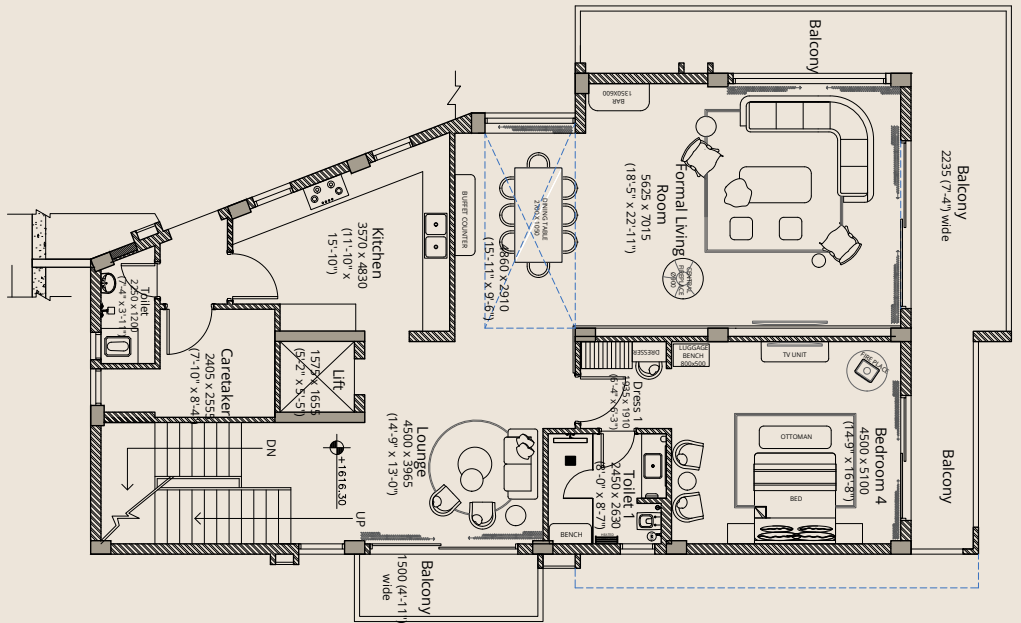
PROJECT AREA
5,817 sq. ft



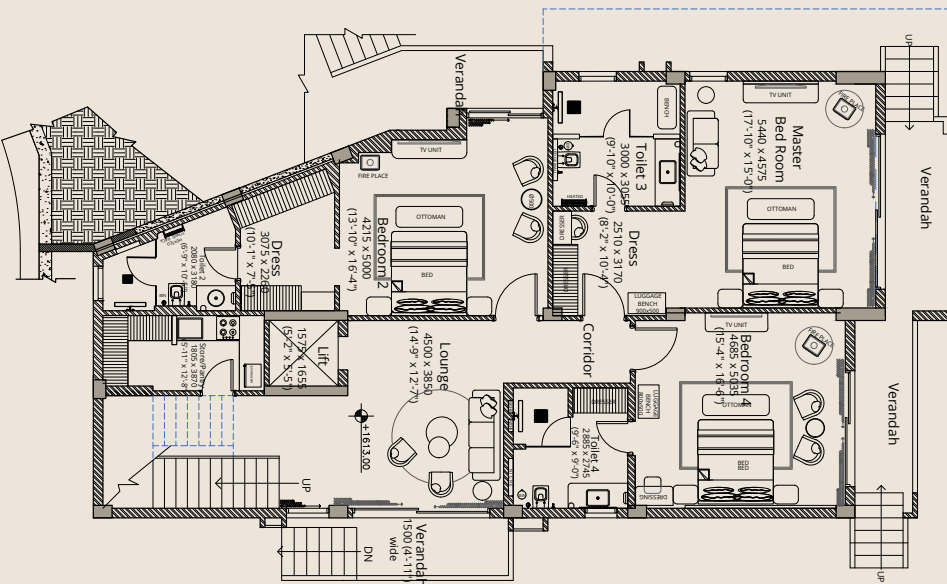
Second floor Level Plan
1,310 sq. ft.



First floor Level Plan
2,296 sq. ft.



Ground floor Level Plan
2,211 sq. ft.





Key features:

- Gated community with round the clock security
- Complete MEP services for hassle free property management by a dedicated team.
- 24hr running hot water supply
- Common wellness areas with Gyms and swimming pool.
- Private terrace jacuzzi and bar with each villa.
- Private elevator
- private outdoor lawn
- dedicated car parking for each villa







Villa 4

📍 Solan, India



PROJECT TYPE
Boutique Villa



STATUS PROJECT
Under Construction

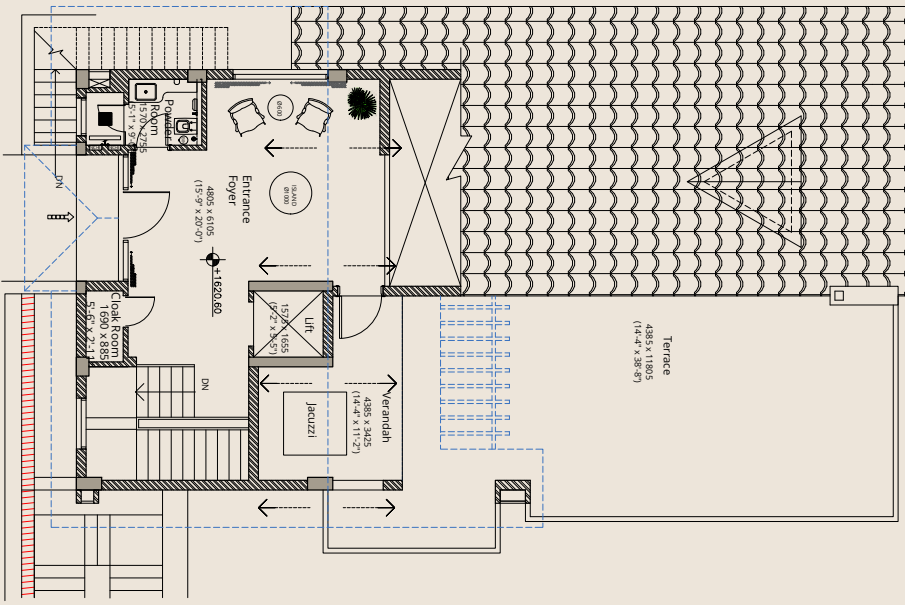


FINISH TARGET
December, 2027

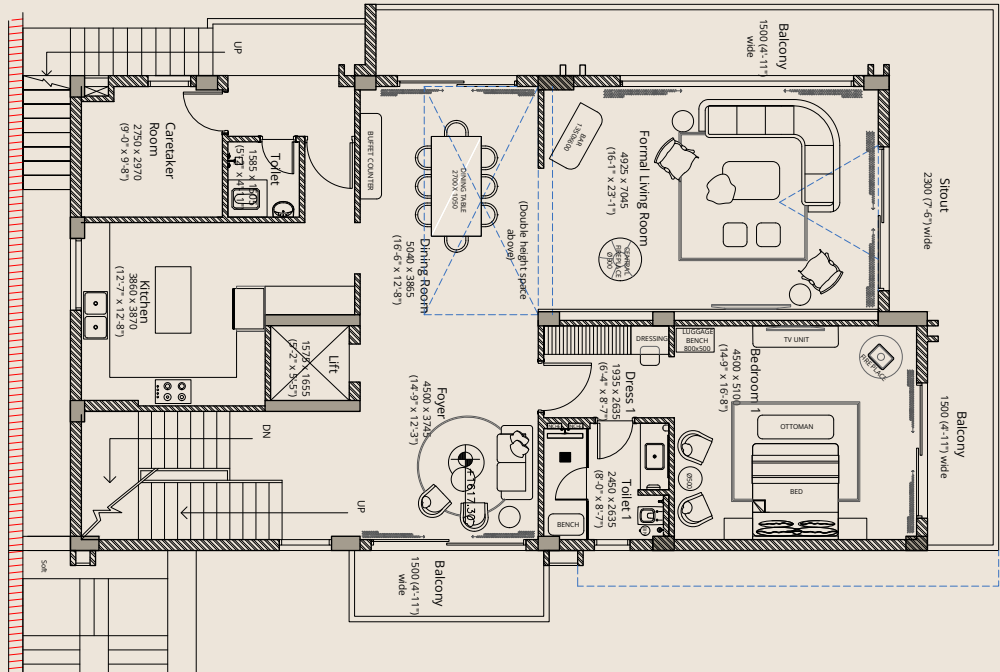


PROJECT AREA
6,178 sq. ft

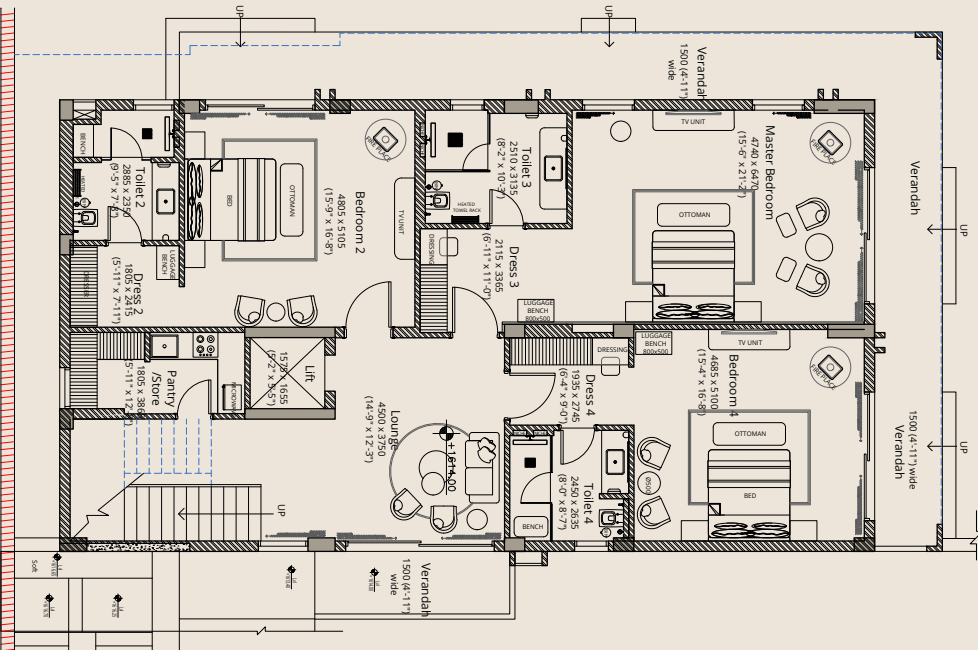




Second floor Level Plan
1,236 sq. ft.



First floor Level Plan
2,497 sq. ft.



Ground floor Level Plan
2,444 sq. ft.

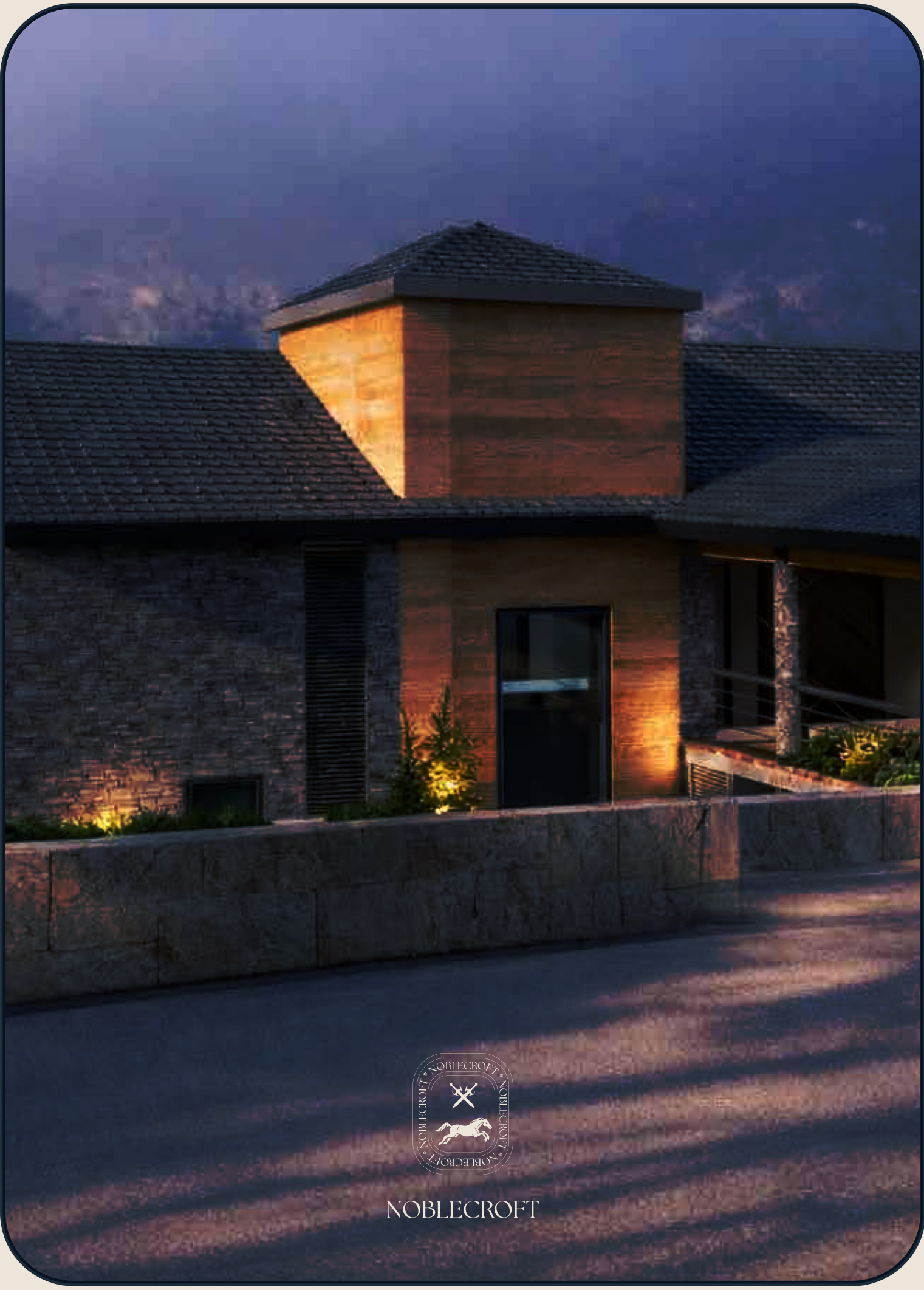


Key features:

- Gated community with round the clock security
- Complete MEP services for hassle free property management by a dedicated team.
- 24hr running hot water supply
- Common wellness areas with Gyms and swimming pool.
- Private terrace jacuzzi and bar with each villa.
- Private elevator
- private outdoor lawn
- dedicated car parking for each villa







NOBLECROFT